

Houzz Tour: Reboot for a 1960s Greenwich Village Apartment

New colors, materials and furnishings, plus a more efficient layout, create a surprisingly fresh 1,000-square-foot home



Nora Burba Trulsson October 23, 2017

Houzz Contributor. Freelance writer specializing in architecture, interiors, landscape,...

[More >](#)



After years of renting, Tina Ramchandani and her husband, Ajay Swamy, searched for an apartment to buy in New York City. They looked in areas from Queens to towns in New Jersey for something that was within their budget and had enough space to accommodate a home office for Ramchandani's interior design business.

A small notice in a neighborhood newspaper led them to the estate sale of a seventh-floor apartment in Manhattan's Greenwich Village that had not been updated since the building was completed in the 1960s. Looking past wood paneling, wallpaper and dark colors, Ramchandani was instantly smitten. Within four months, she had transformed it into a fresh, modern setting that she and Swamy favor.



"After" photos by [Jacob Snavely](#)

House at a Glance

Who lives here:

Tina Ramchandani, an interior designer, and Ajay Swamy, a product leader

Location: Greenwich Village, New York

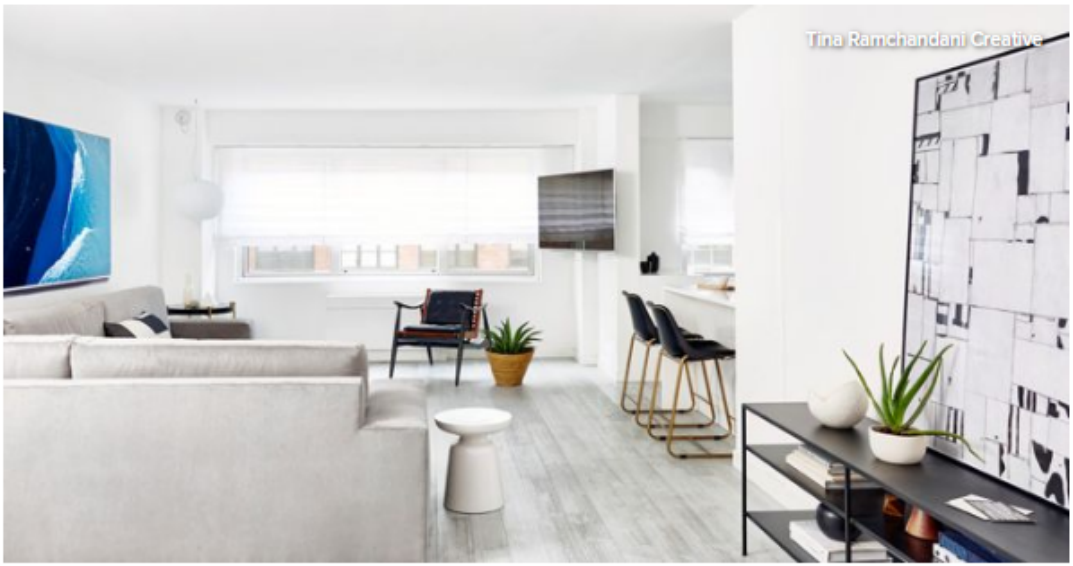
Size: 1,050 square feet (98 square meters); one bedroom, one bath

Design and build team: [Tina Ramchandani](#) (interior designer) and Pegasus Realty Solutions (contractor)

Before: The apartment's original interior, including the living room shown here, had parquet flooring, traditional furniture and, in other spaces, dark-colored walls that added a sense of

gloom to the setting.

"This apartment was on the market for a while," says Ramchandani. "I think people took one look and couldn't see past the surface things. I've done so many renovations that I wasn't daunted. I saw a large central space for a living and dining area and knew that it was an easy fix to move a few walls to get what we needed."



After: Pale oak flooring throughout and white walls provide a clean, fresh backdrop for the main open space in the apartment, which includes the living room and entry, shown here. Ramchandani also reconfigured the kitchen at right to open onto the living room and tucked a flat-screen TV and media cabinet into a corner wall.

One large Roman shade, as opposed to three smaller ones for each window, provides privacy and visually lengthens the window wall.

The designer kept the furnishings simple and, except for art, used a neutral palette so the small interior wouldn't be overwhelmed.

"We have a big family and entertain a lot," Ramchandani says, "so I designed a custom sectional for maximum seating."

Custom sectional: Home Interiors by Anthony Giaramita; white side table: West Elm; console: Room & Board; paint: Super White, Benjamin Moore



The renovated apartment's pale, neutral colors for the background and furniture not only visually enlarge the space but also serve a purpose in Ramchandani's design business, which she runs from home. "I pick a lot of colors for my clients all day long," she says. "My white surroundings don't interfere with that."

In a corner of the living room, furniture with slim, midcentury profiles keeps things airy. The sofa's Robert Allen cotton fabric appears as several shades of gray, depending on the light angle.

Chair: Suite New York; coffee table: CB2; pendant light: FLOS

Chair: Suite New York; coffee

Before Photo



Before: Traditional chandeliers and wood paneling graced the original dining area next to the coat closet and entry door. Ramchandani opted to close off the alcove where the sofa was located, creating her home office.



After: The dining area is in the same spot in this view of the entry from the living room. The doors to the coat closet and home office are on the far left.

The couple picked up the sectional's accessory pillows during a trip to Morocco.



A custom banquette invites lingering around the dining table. The couple collected the artwork over the years.

Banquette: Home Interiors by Anthony Giaramita; table: RH; Panton chairs: Vitra; pendant light: FLOS



Before: The narrow, galley-style kitchen opened onto the alcove off the entry and featured the original 1960s-era cabinetry.



After: Ramchandani sealed off the kitchen's original entrance on the right and placed the refrigerator against the new wall. She opened the kitchen to the living room for easier entertaining. Removing the wall between the kitchen and the living room also flooded the interior with more natural light.

New high-gloss Poggenpohl cabinetry as well as the white Caesarstone countertops and backsplash help bounce light into the space and reiterate the apartment's uncluttered style. Cabinetry panels on the Liebherr refrigerator and the Miele dishwasher provide a seamless look.

Range and microwave: Smeg; sink: Blanco; faucet: Kohler, via Blackman Plumbing Supply; ceiling light: FLOS



During the course of remodeling the kitchen, Ramchandani salvaged a strip of the original wallpaper and decided to frame it as a reminder of the apartment's past life.

Before Photo



Before: The bedroom shutters, wallpaper trim and dark wood flooring made it seem small and a tad claustrophobic.



After: To create a new, serene bedroom, Ramchandani painted the walls a soothing pale gray and built a soffit above the window for new lighting and blackout shades. She also had the radiator painted the same color as the walls to make it visually recede.

"The bedroom is actually a pretty good size," she says. "We borrowed a few feet of space to create a new master closet."

Paint: Bunny Gray, Benjamin Moore

Tina Ramchandani Creative



As in the rest of the house, furnishings and accessories were kept simple in the bedroom.

Bed: Serena & Lily; nightstand: Pottery Barn; bedside light: Circa Lighting



A hallway links the master bedroom to the master bath through the doorway on the left. The walk-in closet is behind the drapery.

Dresser and white table: West Elm; mirror: One Kings Lane



Before: The bathroom featured style elements of a half-century ago. The doorway offered a clear view of the toilet from the apartment's entry.



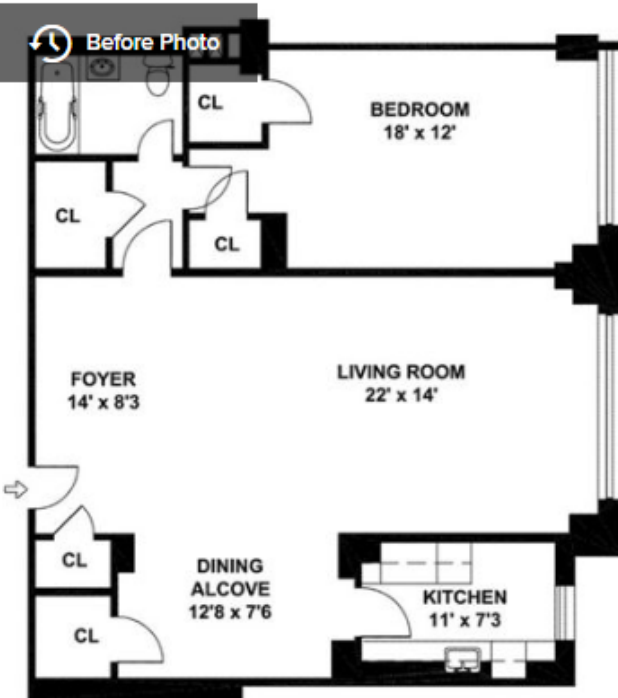
After: Ramchandani moved the bathroom door so that it opened onto a hallway off the master bedroom, adding privacy. She also replaced the tub with a walk-in shower. The step up allowed the couple to do the new plumbing work within their apartment without having to access it via the neighbor's bathroom below.

Vanity: RH; countertops, Caesarstone; shower fixtures: Hansgrohe

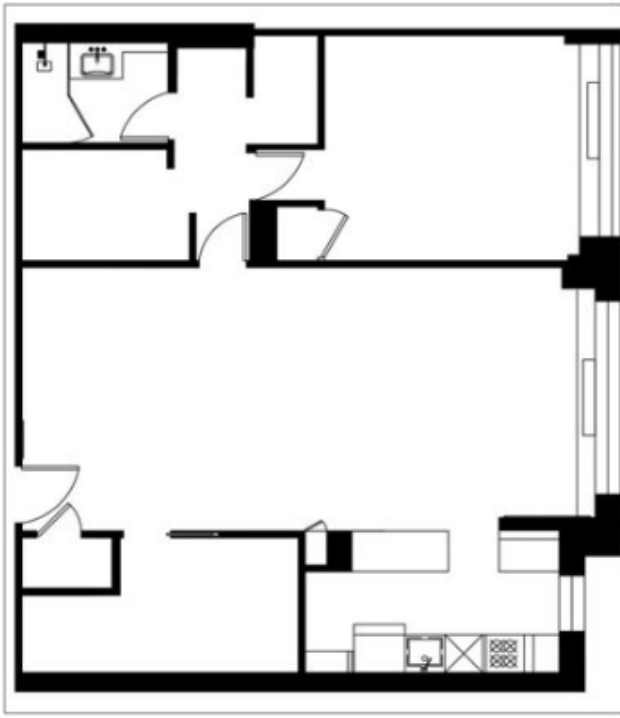


Gray, linen-textured tiles on the walls and floor add a tailored touch to the bathroom. The wraparound counter provides an extra landing next to the sink.

Faucet: Brizo, via Blackman Plumbing Supply; linear light: Sonneman



Before: Here's a look at the apartment's floor plan before the renovation.



After: The apartment's floor plan after the remodeling shows how the alcove at the bottom became a home office. The bedroom's closets and the bathroom at the top left were reconfigured for more storage and privacy.

Browse more homes by style:

[Apartments](#) | [Barn Homes](#) | [Colorful Homes](#) | [Contemporary Homes](#) | [Eclectic Homes](#) | [Farmhouses](#) | [Floating Homes](#) | [Guesthouses](#) | [Homes Around the World](#) | [Lofts](#) | [Midcentury Homes](#) | [Modern Homes](#) | [Ranch Homes](#) | [Small Homes](#) | [Townhouses](#) | [Traditional Homes](#) | [Transitional Homes](#) | [Vacation Homes](#)